

A RESOLUTION OF THE BOARD OF COUNTY COMMISSIONERS  
OF TAYLOR COUNTY, FLORIDA REQUESTING A BOUNDARY CHANGE  
FROM THE STATE OF FLORIDA DEPARTMENT OF ECONOMIC OPPORTUNITY,  
FOR CHANGES TO THE BOUNDARY OF THE EXISTING STATE DESIGNATED  
TAYLOR COUNTY ENTERPRISE ZONE AND AUTHORIZING THE SUBMISSION  
OF THE APPLICATION FOR SUCH CHANGES PROVIDING THE BASIS FOR  
THE CHANGE IN ACCORDANCE WITH SECTION 290.0055(6)(d)(1),  
FLORIDA STATUTES; AND PROVIDING AN EFFECTIVE DATE

WHEREAS, on January 1, 2006 Taylor County was designated an Enterprise Zone Under the Enterprise Zone Program of the State of Florida ("State"), pursuant to Section 290.0065, Florida Statutes, and

WHEREAS, the Taylor Enterprise Zone has been designated EZ-6201 by the State, and

WHEREAS, it is the considered opinion of the Taylor County Development Authority that the boundary should be amended and that the nominated area nominated will enhance the quality of existing business and promote the creation of new business in the enterprise zone; and

WHEREAS, the 2013 legislative session authorized Enterprise Zones with a current area of between fifteen and twenty square miles that contain a Rural Area of Critical Economic Concern (RACEC) to apply to the Department of Economic Opportunity to expand the area enterprise zone by not more than three square miles; and

WHEREAS, Taylor County Enterprise Zone EZ-6201 meets the criteria set forth for the expansion of its enterprise zone by three square miles; and

WHEREAS, the notice requirements contained within Section 290.0055(6) Florida Statutes were met when a notice of the adoption of a resolution seeking a change in the boundary of the enterprise zone was published in the TACO Times on August 7, 2013.

BE IT RESOLVED BY THE BOARD OF COUNTY COMMISSIONERS OF TAYLOR COUNTY, FLORIDA:

That the Taylor County Development Authority is hereby authorized to submit an application to the State of Florida Department of Economic Opportunity for the changes to the boundary shown in Exhibit A, which is attached hereto and made a part hereof, to the existing enterprise zone of Taylor County.

DONE, ADOPTED AND PASSED by the Board of County Commissioners of Taylor County this 4<sup>th</sup> day of November, 2013.

Attest:  
WITNESS:

Taylor County Florida

Gary Knowles  
Print Name: Gary Knowles, D.C.  
for Annie Mae Murphy, Clerk

By: [Signature]



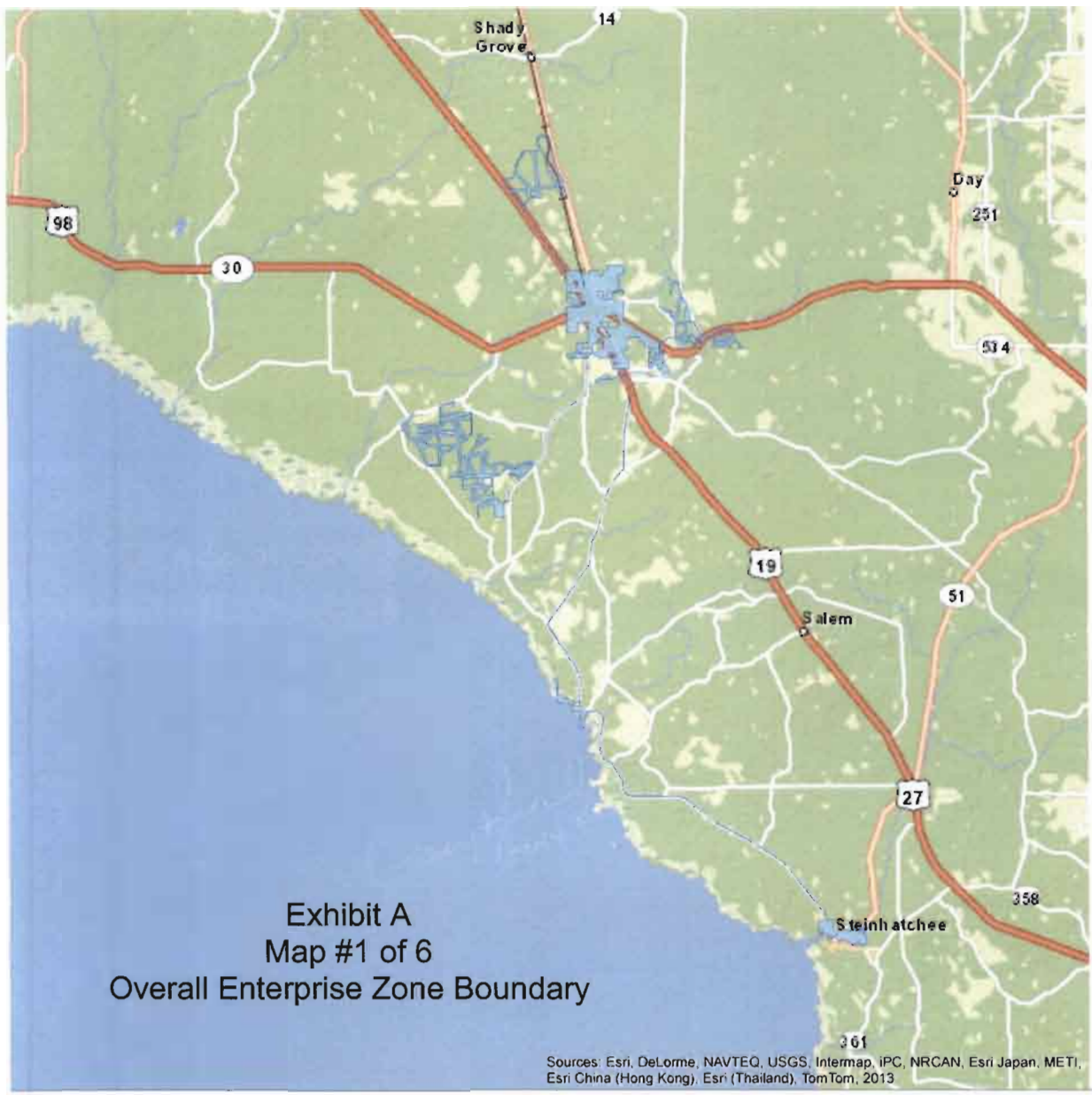


Exhibit A  
Map #1 of 6  
Overall Enterprise Zone Boundary

Sources: Esri, DeLorme, NAVTEQ, USGS, Intermap, IPC, NRCAN, Esri Japan, METI, Esri China (Hong Kong), Esri (Thailand), TomTom, 2013

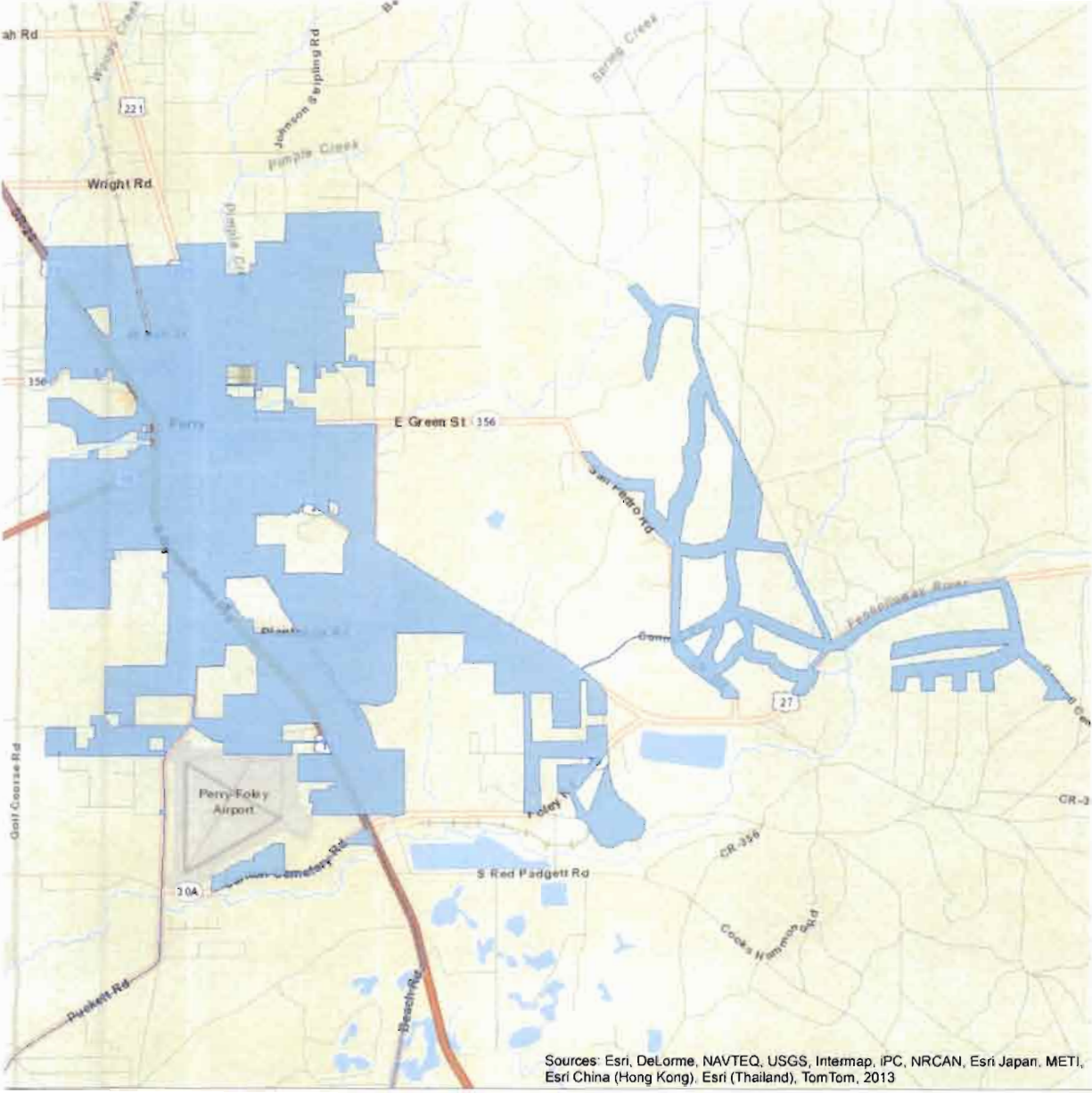
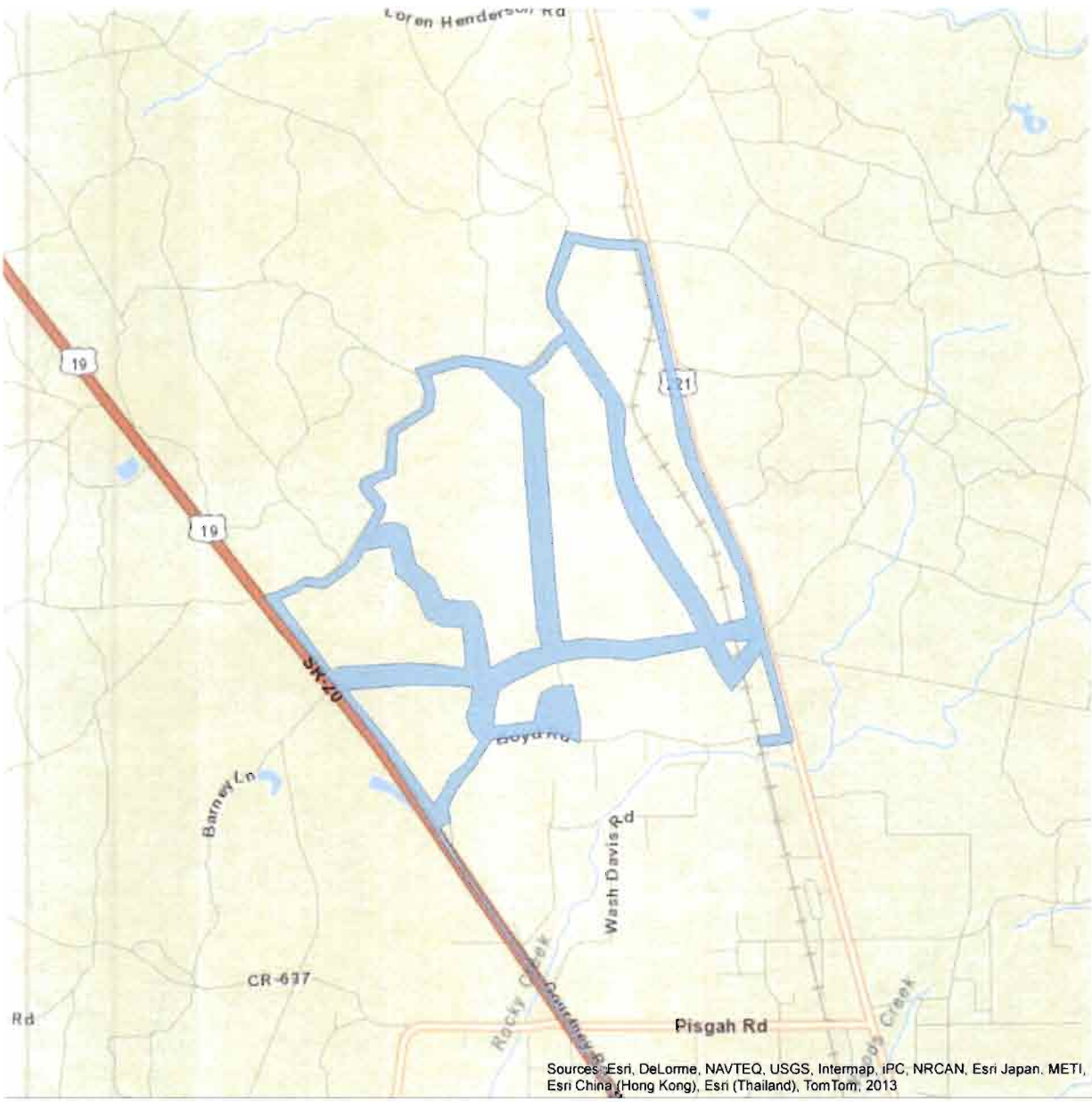


Exhibit A  
Map #2 of 6

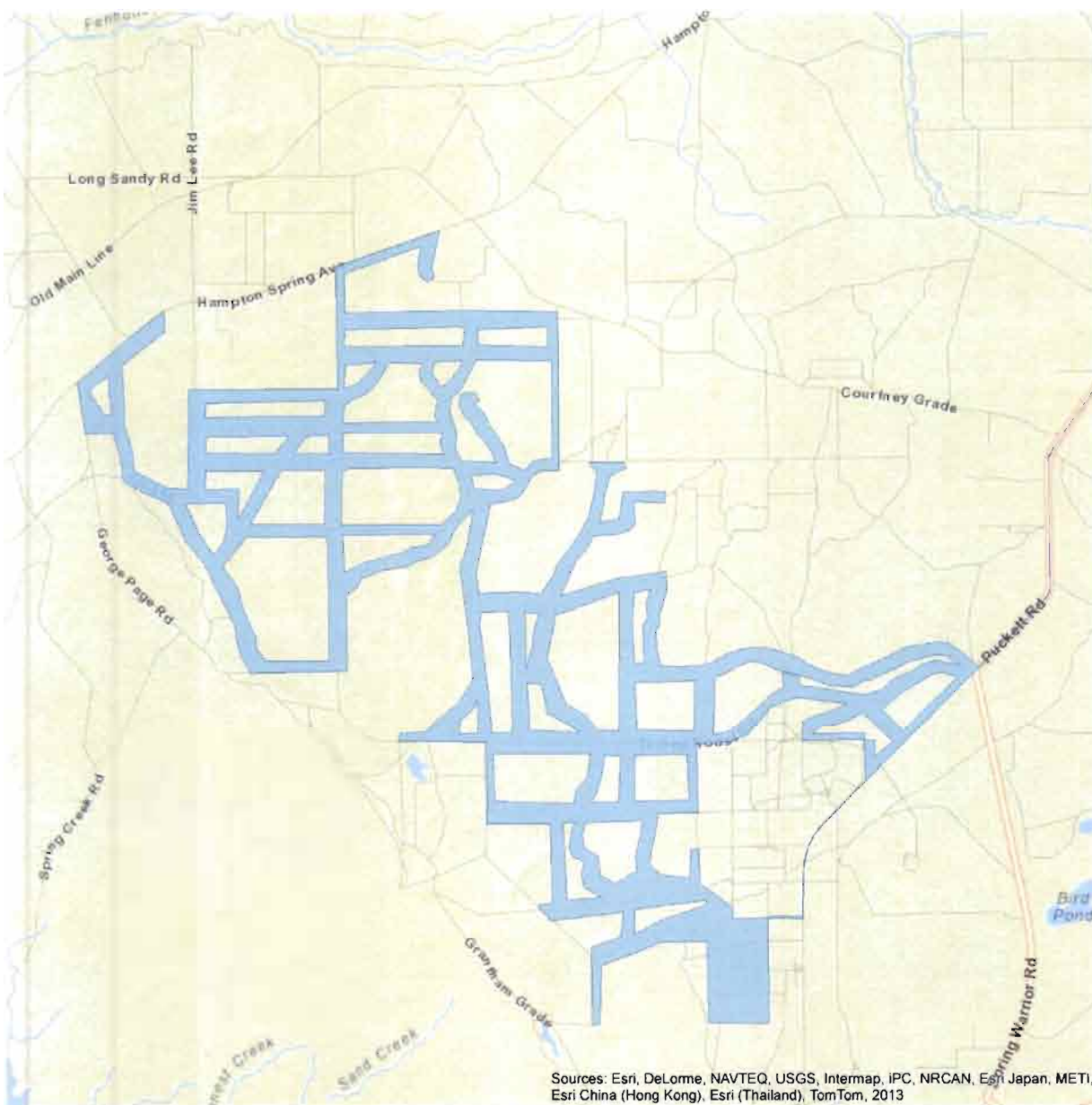
Sources: Esri, DeLorme, NAVTEQ, USGS, Intermap, IPC, NRCAN, Esri Japan, METI, Esri China (Hong Kong), Esri (Thailand), TomTom, 2013

Exhibit A  
Map #3 of 6



Sources: Esri, DeLorme, NAVTEQ, USGS, Intermap, iPC, NRCAN, Esri Japan, METI, Esri China (Hong Kong), Esri (Thailand), TomTom, 2013

Exhibit A  
Map #4 of 6



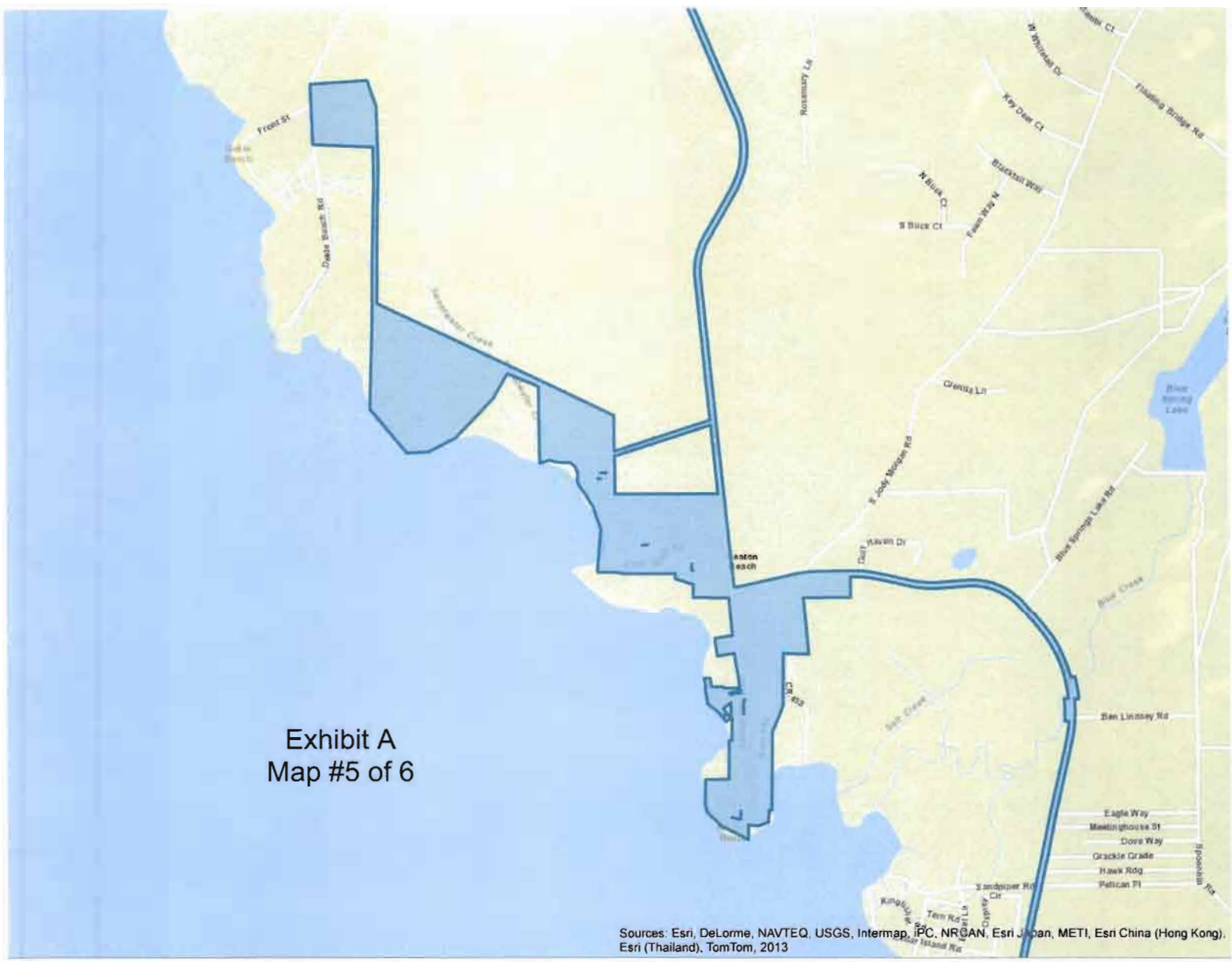
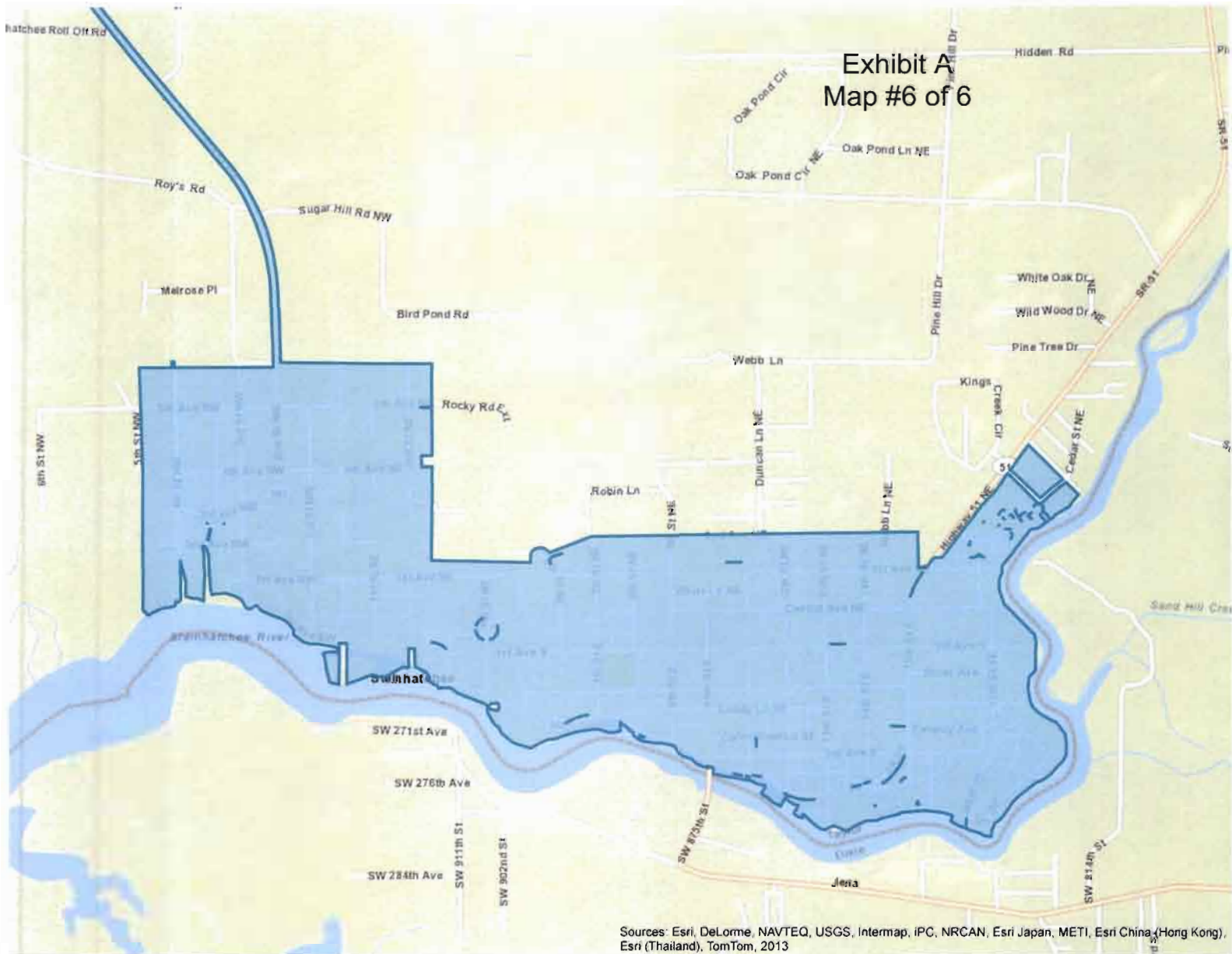


Exhibit A  
Map #5 of 6

Sources: Esri, DeLorme, NAVTEQ, USGS, Intermap, iPC, NRCAN, Esri Japan, METI, Esri China (Hong Kong), Esri (Thailand), TomTom, 2013

Exhibit A  
Map #6 of 6



Sources: Esri, DeLorme, NAVTEQ, USGS, Intermap, iPC, NRCAN, Esri Japan, METI, Esri China (Hong Kong), Esri (Thailand), TomTom, 2013